

Royce PDF Printer User Guide

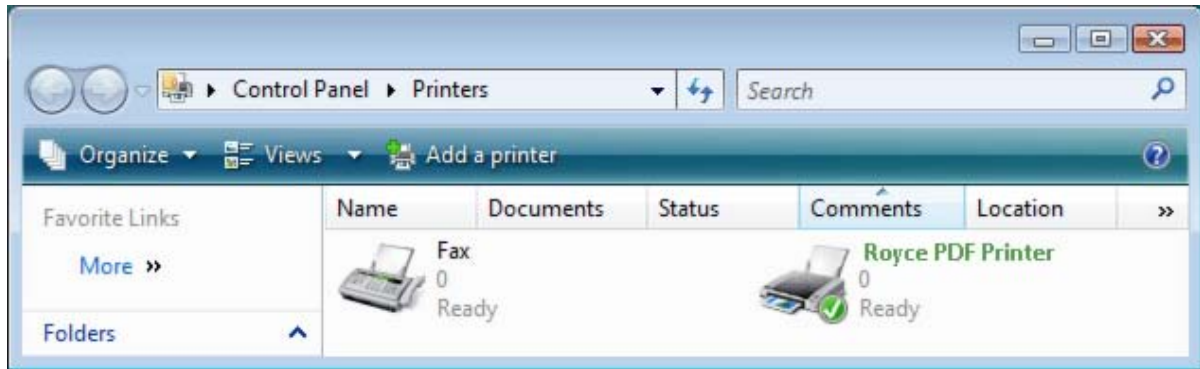


(c) 2010 Roycesoft Corporation

Table of Contents

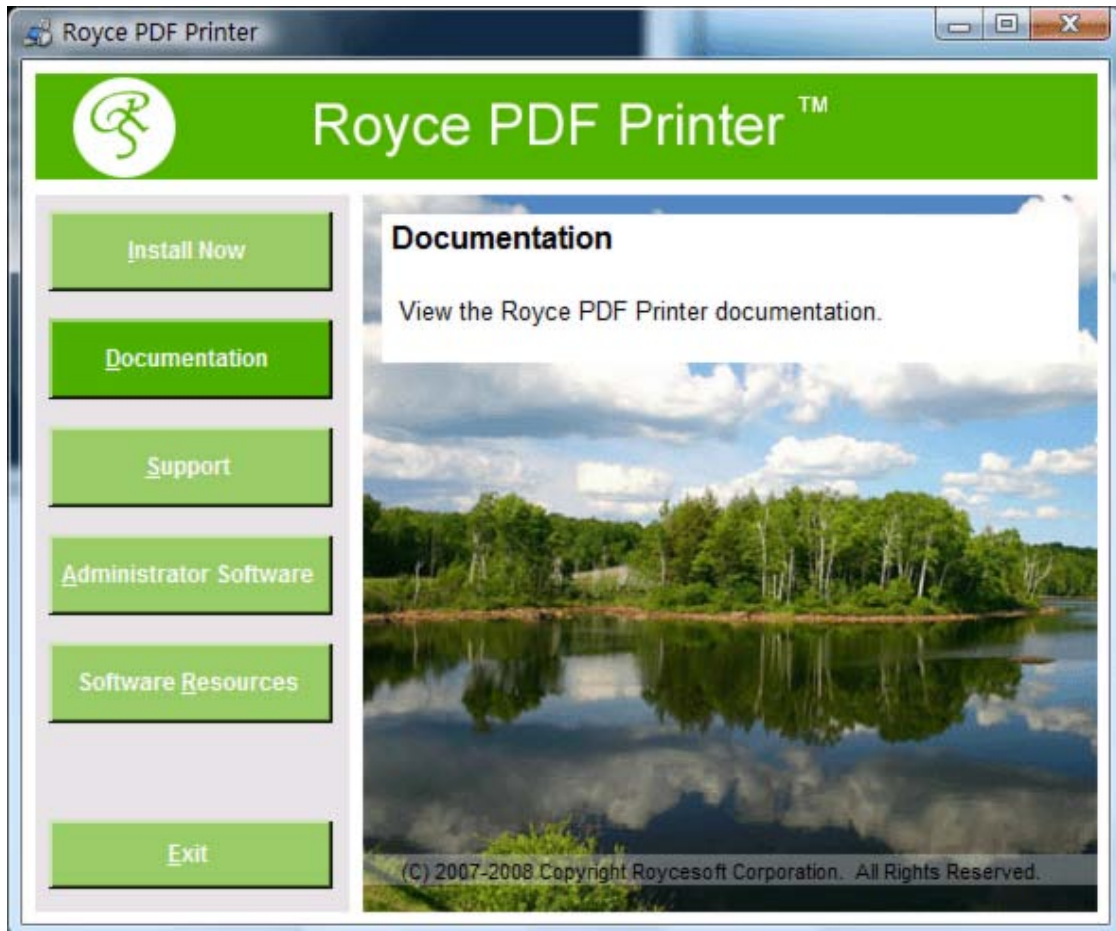
Royce PDF Printer	4
Trademark and Copyright Information	4
Printer Basics	6
Major Features	7
Printer Engine Capabilities	9
System Requirement	10
Create PDF	11
Document Properties	13
Overwrite Options	14
General Settings	15
Image Compression	16
Font Embedding	19
Color Management	21
Document Security	23
Output Options	25
PDF Attachment	27
Remove Watermark	28
Technical Support	29
Frequently Asked Questions	30
Purchase & Order	33
Online Purchase	33
Purchase Order	35
Other Ways of Order	36
Installer Customization Tool	37
Driver Deployment Tool	41
PDF Server Management	43

Royce PDF Printer



Royce PDF Printer

User Guide



Trademark and Copyright Information

Copyright and License

© 2010 Copyright Roycesoft Corporation.

Reproduction, adaptation, or translation without prior written permission is prohibited, except as allowed under the copyright laws.

The information contained herein is subject to change without notice.

The only warranties for Roycesoft products and services are set forth in the express warranty statements accompanying such products and services. Nothing herein should be construed as constituting an additional warranty. Roycesoft shall not be liable for technical or editorial errors or omissions contained herein.

Part number: RPP10-2360

Trademark Credits

Adobe® and PostScript are trademarks of Adobe Systems Incorporated.

Linux is a U.S. registered trademark of Linus Torvalds.

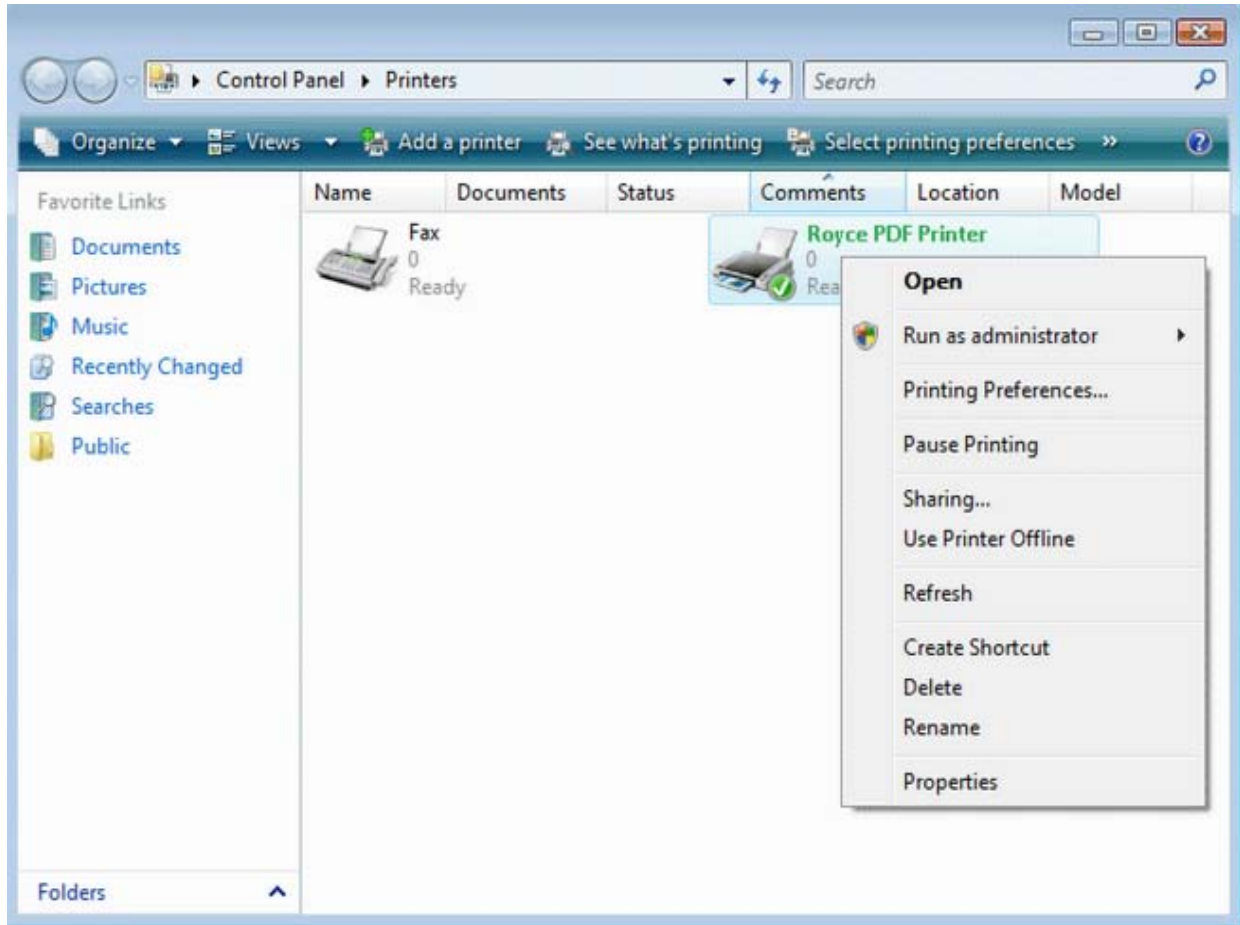
Microsoft® Windows®, and Windows NT® are U.S. registered trademarks of Microsoft Corp.

UNIX® is a registered trademark of The Open Group.

Printer Basics

Royce PDF Printer allows you to quickly turn your graphics and electronic documents to Adobe PDF with professional quality. Useful features, such as encryption, compression, font embedding, RGB, sRGB, CMYK color space conversion, automation options, PDF attachment, merge, append, overwrite options, active hyperlink, custom paper size, terminal server compatibility, and premium technical support are ALL included.

Royce PDF Printer enables you to create and optimize PDF output for its intended use. You can make PDF documents small for Web display or high resolution for printing with Royce PDF Printer's powerful Compression features. You can also embed fonts, if needed, in the PDF document to ensure correct document display.



A few simple clicks will convert almost any of your existing documents to a high quality PDF File.

Royce PDF Printer installs itself as a virtual printer driver. After a successful installation, a Royce PDF Printer will appear in your Printers and Faxes folder/list.

To create PDF files, all you have to do is to print your documents (from Microsoft Word, WordPad, NotePad or any other software) to this Royce PDF Printer.

Open a document, select Print and choose Royce PDF Printer. Confirm your Print. It will ask you where to save the PDF file and when finished, the PDF file will be automatically opened.

Major Features

The following matrix shows the feature of the latest Royce PDF Printer 3.0 (build 396) as compared with its previous version,

Product Features	Royce PDF Printer 2.0 (build 368)	Royce PDF Printer 3.0 (build 396)
Create Adobe PDF by printing from any Windows application that can print	Yes	Yes
Quickly convert Microsoft Word, Excel, PowerPoint, Visio, Access documents to PDF	Yes	Yes
Embed fonts into PDF automatically	Yes	Yes
Produce full-text searchable PDF documents	Yes	Yes
Archive web pages as Adobe PDF files	Yes	Yes
Optimize Adobe PDF output by compression	Yes	Yes
Archive web pages to PDF with all images and background	Yes	Yes
Windows Vista compatible	Yes	Yes
Secure PDF document with Password (128-bit RC4 encryption)	No	Yes
Protect PDF file with Access, Print, Modify, Annotation, Form Filling-in permissions	No	Yes
Restrict viewing, printing, editing, or copying of documents	No	Yes
Combine multiple PDF documents into one PDF File	No	Yes
Embed TrueType, OpenType, Type1, Windows FNT/FON, CID font with PDF document	No	Yes
Support CIE color space conversion and ICC profile embedding	No	Yes
Specify custom paper size	No	Yes
Accurate downsampling for images	No	Yes
Active hyperlink after conversion to PDF	No	Yes
JPEG 2000 powered image conversion engine	No	Yes

Totally vector-based output for conversion from DWG to PDF, and DXF to PDF	No	Yes
Integrated Word, Excel, PowerPoint, Visio document with PDF document as Attachment	No	Yes
Produce ultra compressed PDF document	No	Yes
Page Orientation with preview	No	Yes
PDF Resolution up to 4800 dpi	No	Yes
Convert JPEG, BMP, PNG, GIF, TIFF etc image formats to PDF in lossless and loss mode	No	Yes
Archive web pages as Adobe PDF files	No	Yes
Transfer document metadata information to PDF output automatically	No	Yes
Create CMYK PDF	No	Yes
Remove hidden sensitive data that would have possibly embedded into PDF	No	Yes
Device independent, RGB, sRGB, CMYK Color Space support	No	Yes
Render with ICC profile and specify rendering intent during conversion	No	Yes
Text, image, compound with PDF transparency	No	Yes
Fast Web View enabled	No	Yes
Support Microsoft & Citrix Terminal Server environment	No	Yes
Fully compliant to the Adobe PDF Specification	No	Yes

Printer Engine Capabilities

PDF Printer Engine Capabilities:

Adobe PDF Version: PDF 1.4, PDF 1.5, PDF 1.6, PDF 1.7
Maximum Resolution: 4800 dpi
Maximum Paper Size: 4800 X 4800 inch
PDF Engine Speed: 760 PPM (Page Per Minute)
Rendering Intent: Absolute, Saturate, Relative
Font Embedding: TrueType, OpenType, Type1, CID-Type1, Multiple Masters Type1, OpenType/CFF, pure CFF, CEF Windows FNT/FON, X11 PCF font
Font Manipulation: Embedding, Subsetting
Print Driver Version: Version-3 (User Mode)
Print Driver Architecture: x86 (32-bit)
Supported Operating Systems: Windows 7, 2008, Vista, XP, 2003, 2000
Compression Method: Run Length, ZIP, JPEG lossless, JPEG non-lossless, JPEG2000
Color Space: CMYK, sRGB, RGB
Print Quality: Desktop publishing, Digital Publishing, and Commercial Publishing
Encryption: 128-bit RC4 (high)
Supported Format: 2,600 graphics and document formats
Server Compatibility: Citrix/terminal services environment, Windows Server
Metadata: Embedding, Adding, Removing, Editing
Paper Sheets Size: Standard, Custom
Maximum PDF Size: 6335 MB
Maximum PDF Attachment Size: 2048 MB
PDF Merge Capability: Append to existing, Insert at the beginning of existing
Device Emulation: Enabled
Business Graphics Support: ICC Profile enabled
Orientation: Portrait, Landscape
Preview: Preview PDF paper/page size, View PDF result after creation
Printer sharing: Point-and-Print support
Network printer support: Enabled
Adobe Acrobat required: No
GhostScript required: No

System Requirement

Designed for Microsoft Windows 7, Windows XP, Windows Server 2003, Windows Vista, and Windows Server 2008.

Basic Requirement

CPU: Pentium III 500MHZ or AMD Athlon 2200+
RAM: 64MB
Free Space: 20 MB

Recommended Requirement

CPU: Pentium IV 1.2GHZ or AMD Athlon 2800+
RAM: 256MB
Free Space: 60 MB

Server OS Requirement:

Windows Server 2008
Windows Server 2003
Windows 2000 Server
Windows Terminal Server
Citrix MetaFrame XP
Citrix Presentation Server

Compatible with:

Windows 7
Windows Vista
Windows XP
Windows MCE
Windows 2000 Professional

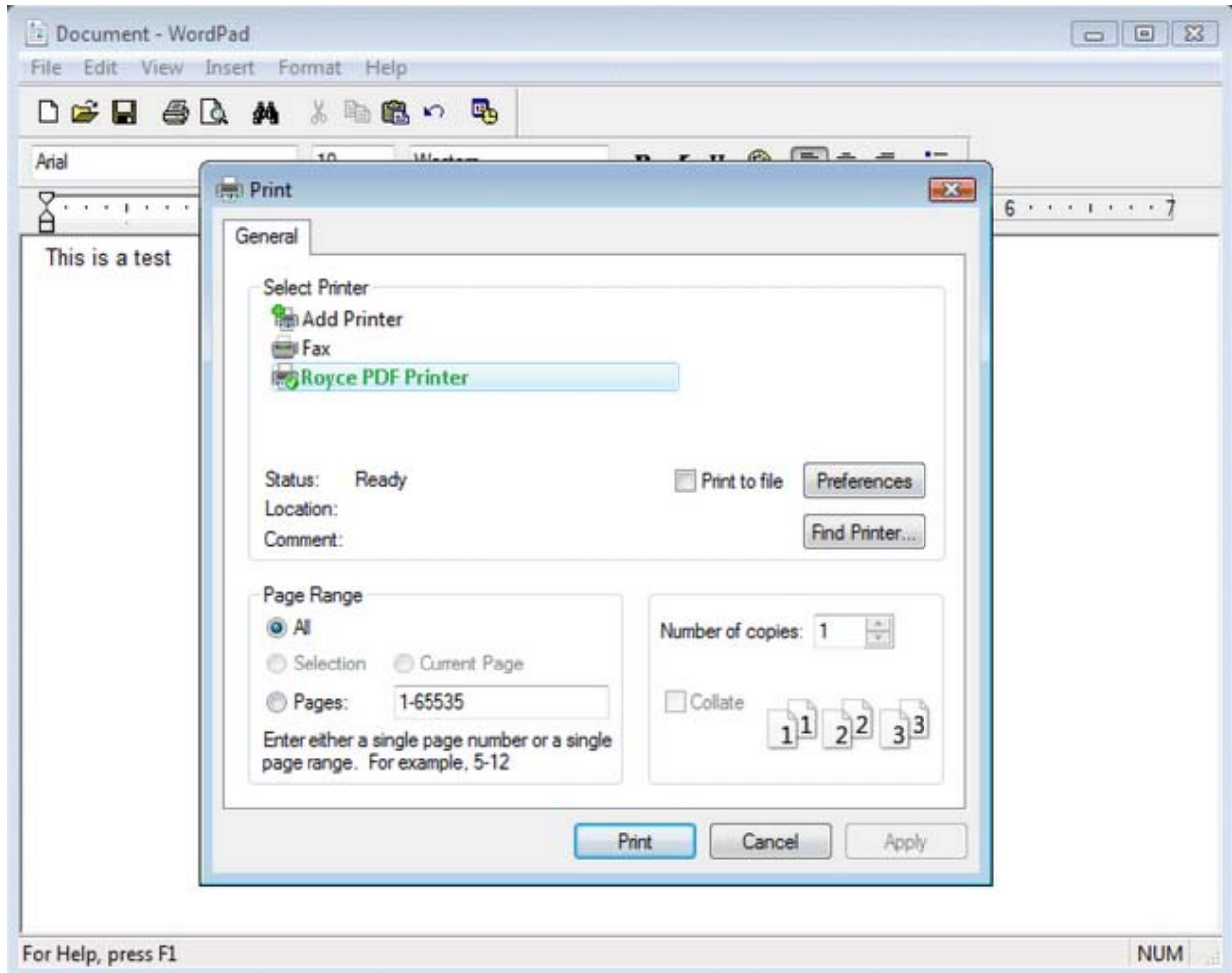
Client OS Requirement:

Windows 7
Windows Vista
Windows XP
Windows MCE
Windows 2000 Professional

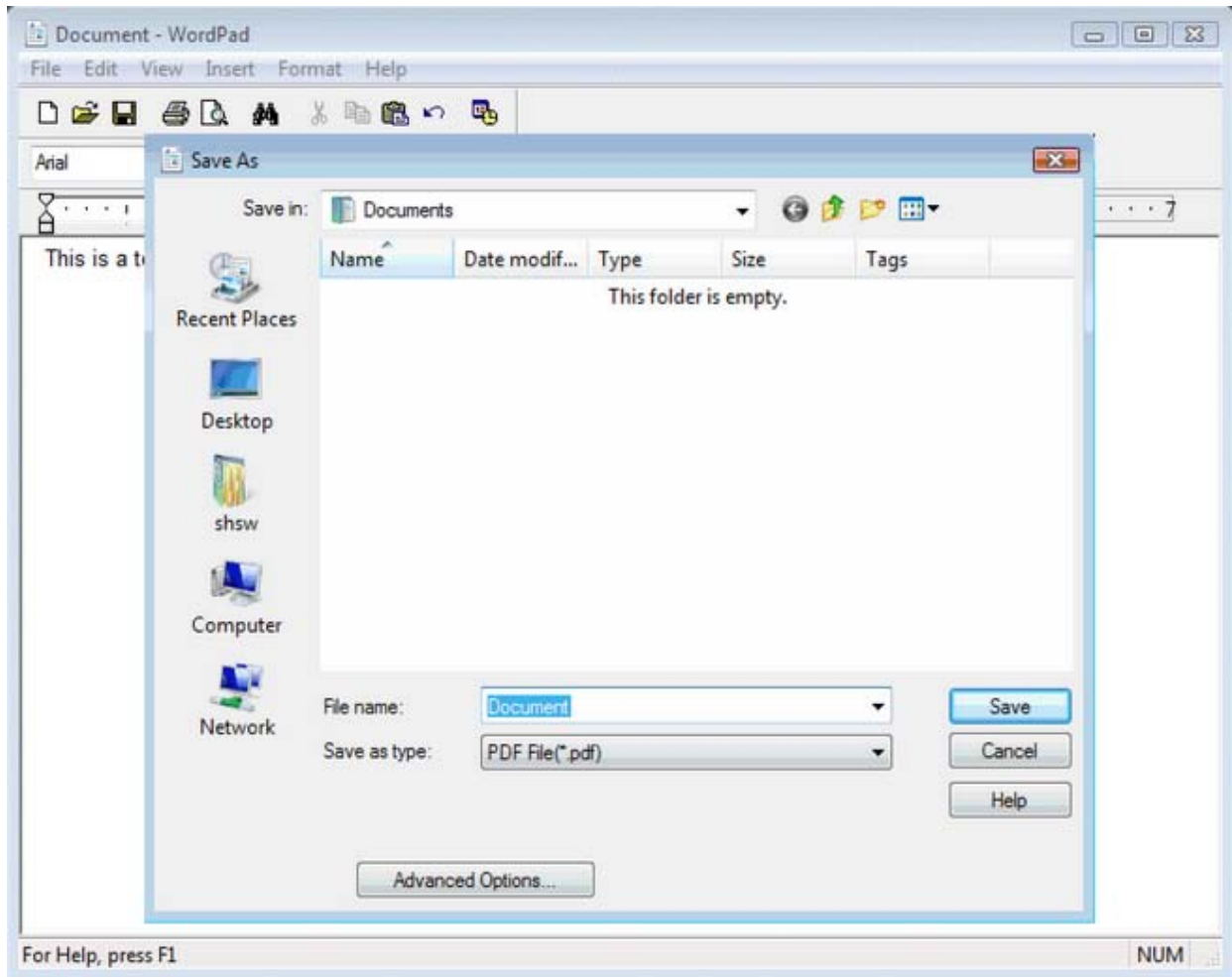
Create PDF

To create PDF files, all you have to do is to follow the 1-2-3 steps:

1. Open a document , choose Print.
2. Select the 'Royce PDF Printer' printer.
3. Confirm your Print.

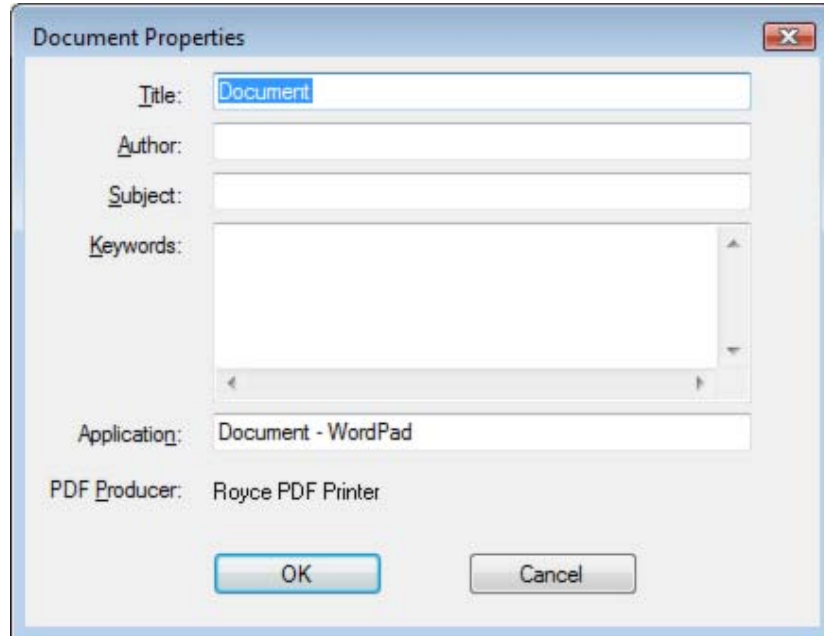


Royce PDF Printer will ask you where to save the PDF file and when finished, the PDF file will be automatically opened in your PDF viewer, usually in Adobe Reader.



Document Properties

With the massive volume of documents being produced every day, creators spend much of their time perfecting content and layout. Far too often, authors ignore the finishing touch, the addition of metadata - an essential collection of information that helps make a document's unique content stand out in the crowd.



The inclusion of metadata can enable your documents with the proper identity so that users can find essential information quickly. When used with a search tool, these documents become part of an index that makes searching large numbers of PDF files fast and efficient.

You will see a number of default metadata options in a PDF document, none of which are populated by Microsoft Office applications other than Title, Subject, Author and Keywords. You can delete these placeholders if needed, but since there is no data there, it should not be a concern.

Metadata is hidden information in a computer file that may contain potentially dangerous or embarrassing information or lead to an accidental disclosure. In Office documents, there are many instances of data hidden in files, such as Word's Track Changes, that have been highly publicized.

For the most part, PDF is immune to these issues. PDFs represent the visual display as it will be printed. Still, it is a good idea to understand what if any risks are associated with PDF and metadata.

So, realistically, here is what firms should be concerned about before sending out a PDF:

1. Are the Title, Subject, Author and Keyword fields empty?

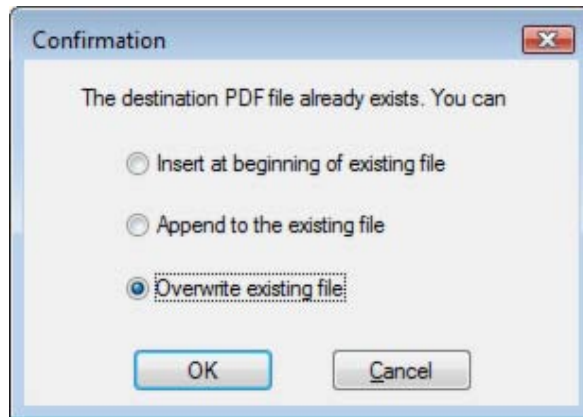
Can be performed manually via Document Properties-->Description or in batch in Acrobat Reader.

2. Are there annotations on the document?

Can be deleted using the Comments tab in Document Properties.

Overwrite Options

Royce PDF Printer pops up a confirmation dialog after it figures out the destination PDF file already exists.



The confirmation dialog provides three options,

1. Insert the resulting PDF file at beginning of the existing PDF file
2. Append the resulting PDF file to the existing PDF file
3. Overwrite existing file

You can choose the option of your preference when the conflict happens.

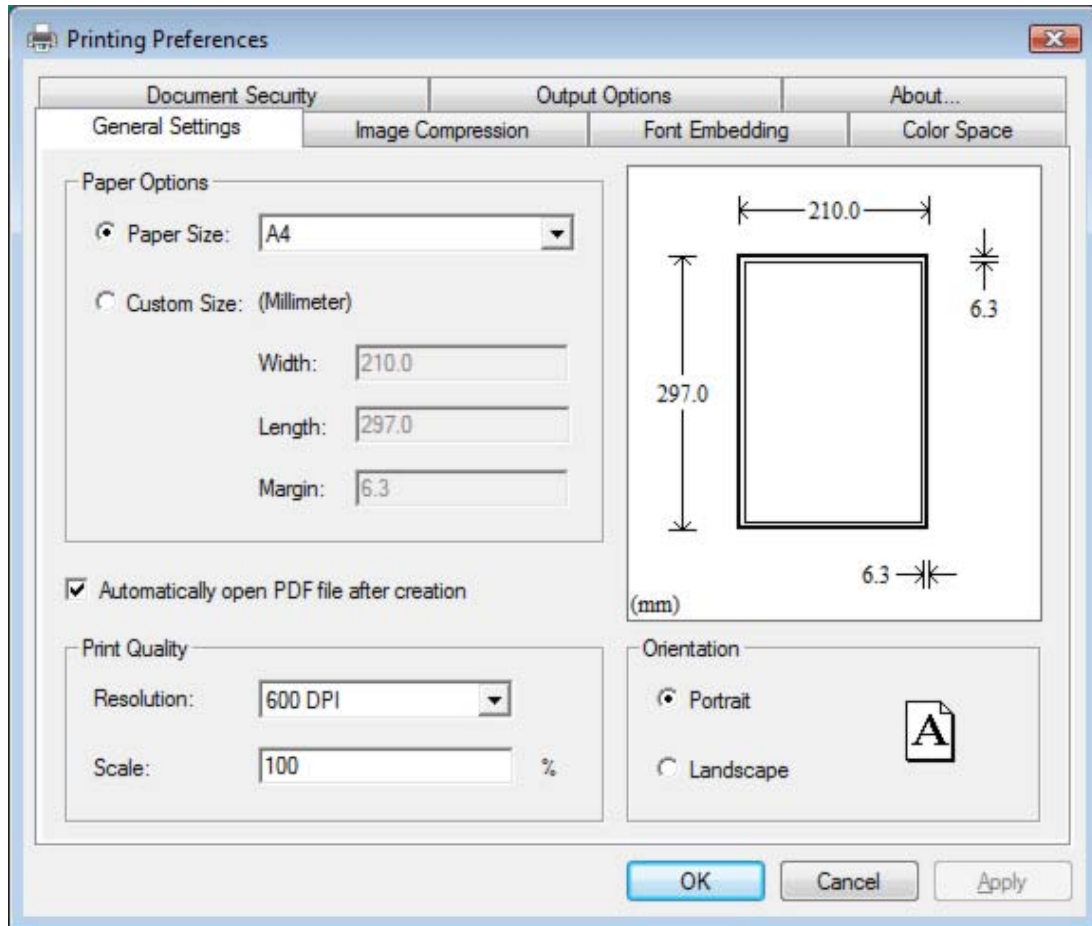
To disable this confirmation dialog for good and all, you would probably be interested in letting the software know your choice in the Output Options tab,

1. Confirm with overwrite options
2. Insert at beginning of existing file
3. Append to existing file
4. Overwrite without asking

Unless you select the first option, Royce PDF Printer will remember your choice each time when destination PDF file is detected to be already in place.

General Settings

Not everything fits neatly onto a standard page. Sometimes you need a larger page size, especially if you're creating engineering drawings or other technical documents. Royce PDF Printer supports ISO, ANSI, JIS, and ARCH formats, making it easy to produce high-quality PDF documents from virtually any large-format document. Just use the Royce PDF Printer - which is automatically installed with the Royce PDF Printer product - to print from your application, and customize the page dimensions for the size you need. Width, Length, and Margin value can be specified to answer your specific need.



Care much on the resolution of your PDF document? In this PDF General Settings tab, you can specify the resolution from 150 dpi to 2400 dpi.

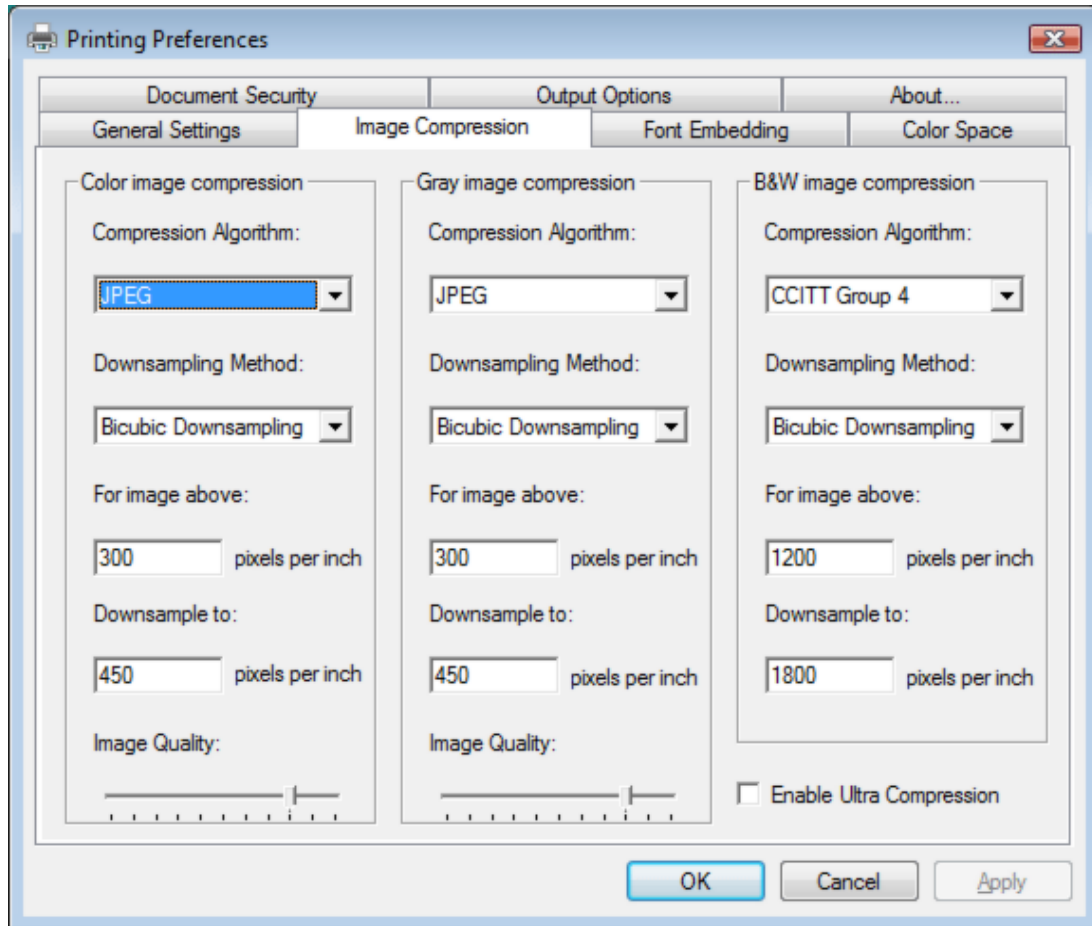
Royce PDF Printer features zoom-in and zoom-out effect in the conversion from a source document to the final PDF document. The default scale is 100%, and you can change this value to virtually any percentage you want.

Either Landscape or Portrait should be specified as the default orientation. Print tickets sending from with an application, such as Microsoft Office, may override the default orientation. Therefore, you could get a PDF file with different page orientation for separate pages, preserving the exact layout and contents of your original document.

A preview window is included in this PDF General Settings tab, and it allows you to know what the size and layout of the PDF output would look like.

Image Compression

In the process of conversion, Royce PDF Printer automatically compresses text, line art, and resamples monochrome, grayscale, color images. Depending on the settings you choose, compression and resampling can significantly reduce the size of a PDF file with little or no loss of detail and precision.



Compression Algorithm:

ZIP is a compression method that works well on images with large areas of single colors or repeating patterns, such as screen shots and simple images. The ZIP method is lossless, which means it does not remove data to reduce the size and so does not affect an image's quality.

The JPEG (Joint Photographic Experts Group) compression method is suitable for grayscale or color images, such as continuous-tone photographs that contain more detail than can be reproduced on-screen or in print. JPEG is lossy, which means that it removes image data and may reduce image quality, but it attempts to reduce file size with the minimum loss of information. Because JPEG eliminates data, it can achieve much smaller file sizes than ZIP compression.

The JPEG2000 is a wavelet-based image compression standard. It was created by the Joint Photographic Experts Group committee in the year 2000 with the intention of superseding their original discrete cosine transform-based JPEG standard (created about 1991). JPEG 2000 requires far greater decompression time than JPEG and allows more sophisticated progressive downloads, yet averages similar compression rates. JPEG 2000 becomes increasingly blurred with higher compression ratios rather than generating JPEG's "blocking and ringing" artifacts, complicating direct comparison of their respective compression rates.

Images machine-judged to be of equivalent quality for both compression schemes often look better to humans in JPEG 2000 at low bitrates.

Image Quality:

Royce PDF Printer provides five JPEG options, ranging from Maximum quality (the least compression and the smallest loss of data) to Minimum quality (the most compression and the greatest loss of data). The loss of detail that results from the Maximum and High quality settings are so slight that most people cannot tell an image has been compressed; at Minimum and Low, however, the image may become blocky and acquire a mosaic look. The Medium quality setting usually strikes the best balance in creating a compact file while still maintaining enough information to produce high-quality images.

The CCITT (International Coordinating Committee for Telephony and Telegraphy) compression method is appropriate for black-and-white images made by paint programs and any images scanned with an image depth of 1 bit. CCITT is a lossless method.

Royce PDF Printer provides the CCITT Group 3 and Group 4 compression options. CCITT Group 4 is a general-purpose method that produces good compression for most types of monochrome images. CCITT Group 3, used by most fax machines, compresses monochrome images one row at a time.

Run Length is a lossless compression option that produces the best results for images that contain large areas of solid white or black.

Resampling Method:

Resampling refers to changing the pixel dimensions (and therefore display size) of an image. When you downsample (or decrease the number of pixels), information is deleted from the image. When you resample up (or increase the number of pixels), new pixels are added based on color values of existing pixels. You specify an interpolation method - average downsampling, bicubic downsampling, or subsampling - to determine how pixels are added or deleted.

To resample an image, Royce PDF Printer combines pixels in a sample area to make one larger pixel. You provide the resolution of your output device in dots per inch (dpi), and Royce PDF Printer combines pixels as needed to reduce the image's resolution (ppi) to the specified dpi setting:

Average downsampling averages the pixels in a sample area and replaces the entire area with the average pixel color at the specified resolution.

Bicubic downsampling uses a weighted average to determine pixel color and usually yields better results than the simple averaging method of downsampling. Bicubic is the slowest but most precise method, resulting in the smoothest tonal gradations.

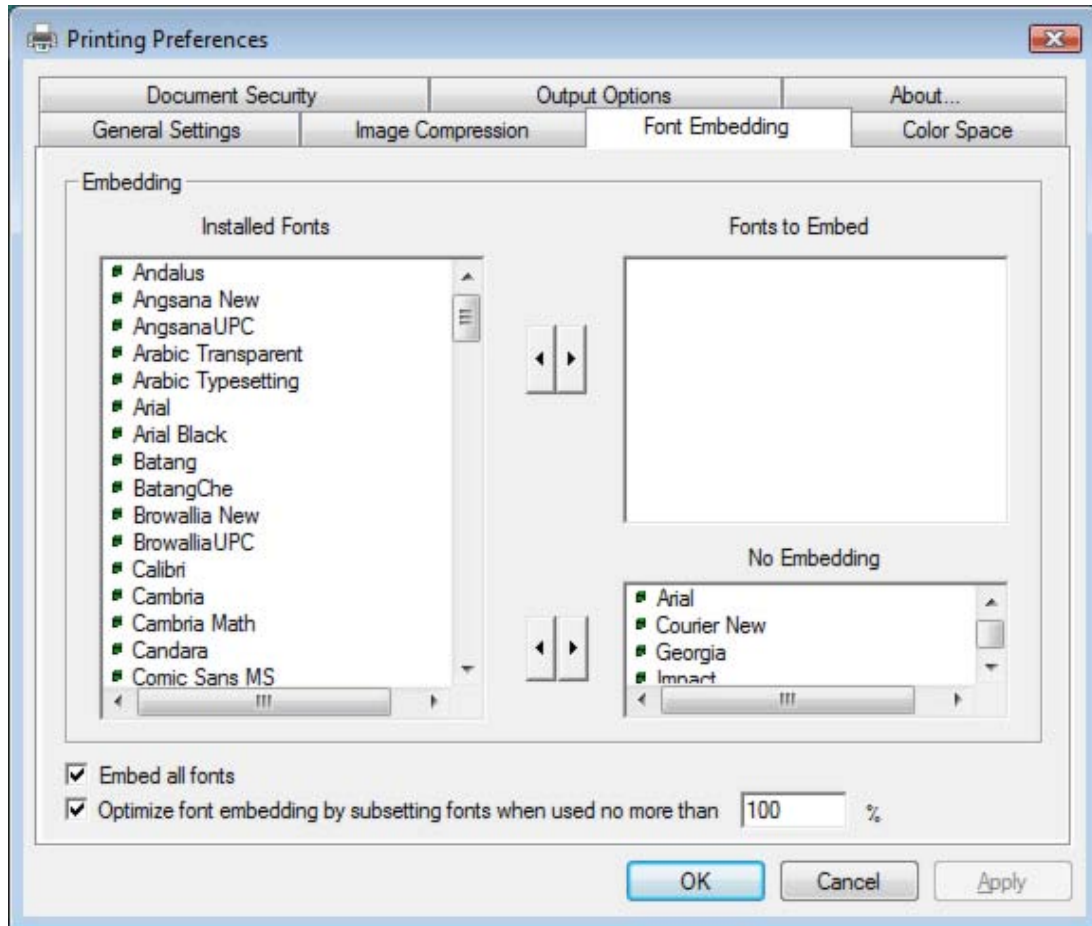
Subsampling chooses a pixel in the center of the sample area and replaces the entire area with that pixel at the specified resolution. Subsampling significantly reduces the conversion time compared with downsampling but results in images that are less smooth and continuous.

Ultra Compression:

Check the option "Enable Ultra Compression", and Royce PDF Printer allows all objects in PDF to be compressed in a stream, thus yielding the best compression ratio.

Font Embedding

When Royce PDF Printer has access to a font used in your source document, it can embed that font in the resulting PDF document. Embedding ensures that all readers will see the text in its original font and be able to print the file using the original fonts; however, embedding fonts increases file size.



Font Embedding and Substitution:

Royce PDF Printer can embed TrueType, OpenType, Type1, CID-Type1, Multiple Masters Type1, OpenType/CFF, pure CFF, CEF Windows FNT/FON, X11 PCF font in a PDF file to prevent font substitution if a user doesn't have that font on their system or available to their printer. For each font embedded, Royce PDF Printer can embed the entire font or the subset of characters used in the file. Embedding a subset saves file space. Type 1 and TrueType fonts can be embedded if they are sent from your Windows application.

If a font is not embedded in a PDF file and the user does not have access to the original font on their system, Royce PDF Printer substitutes the font with the nearest type. If the metrics of the original font are included in the PDF file, the Multiple Master typeface can stretch or condense to fit, to ensure that line and page breaks are maintained from the original document. The substitution cannot always match the shape of the original characters, however, especially if the characters are unconventional ones, such as script typefaces.

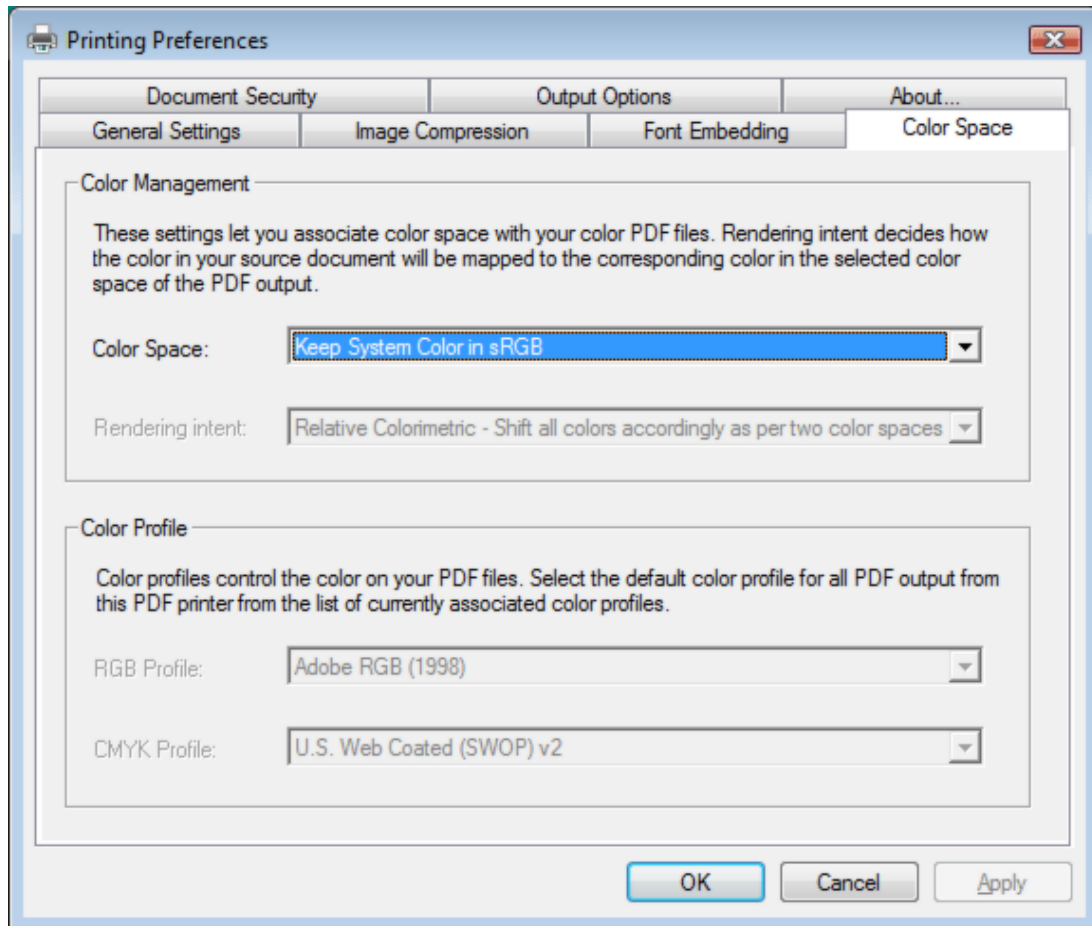
For Asian text, Royce PDF Printer uses fonts from the installed Asian language packs or from similar fonts on the user's system. Fonts from some languages or with unknown encodings cannot be substituted; in these cases, the text appears as bullets in the file.

Subset All Embedded Fonts:

To embed only a subset of the fonts, select 'Optimize font embedding by subsetting fonts when used no more than' and specify a threshold percentage. If the threshold is 45, for example, and less than 45% of the characters are used, Royce PDF Printer embeds only those characters.

Color Management

By their very natures, a monitor and printer reproduce color in completely different ways. Color Management is designed to reconcile the different color capabilities of scanners, monitors, and printers to ensure consistent color throughout the creation, display, and print process. Ideally, this means that the colors displayed on your monitor accurately represent the colors of the final output. It also means that different applications, monitors, and operating systems will display colors consistently.



Color Management Policies:

Keep Device Color in RGB: This option leaves device-dependent colors unchanged and preserves device-independent colors as the nearest possible equivalent in PDF. It is a useful option for print shops that have calibrated all their devices, used that information to specify color in the file, and are only outputting to those devices.

Keep System Color in sRGB: This option lets you embed an ICC profile compliant to sRGB standard when distilling files and calibrates color in the images, making colors in the resulting PDF files device-independent. Since sRGB standard is popular, Color Management does not embed ICC profiles any more. However, device-dependent color spaces in files (RGB, Grayscale, and CMYK) are converted to sRGB color space.

Convert to sRGB Color Space: This option calibrates color in the file, making the color device-independent. All colors in CMYK and RGB images are converted to sRGB.

Convert to CMYK Color Space: This option calibrates color in the file, making the color device-independent. All colors in RGB and sRGB images are converted to CMYK.

Grayscale images are usually left unchanged. This option usually reduces the size and increases the display speed of PDF files because less information is needed to describe RGB images than CMYK images. Because RGB is the native color space used on monitors, no color conversion is necessary during display, which contributes to fast online viewing. This option is recommended if the PDF file will be used online or with low-end printers. CMYK is recommended for prepress or press printing and high-end printers.

Rendering Intent:

This option allows you to specify how to map colors between two color spaces. The result of any particular method depends on the profiles of the color spaces. For example, some profiles produce identical results with different methods:

Perceptual maintains the relative color values among the original pixels as they are mapped to the destination gamut. This method preserves the visual relationship between colors, although the color values themselves may change.

Saturation maintains the relative saturation values of the original pixels. This method is suitable for business graphics, where the exact relationship between colors is not as important as having bright saturated colors.

Relative Colorimetric remaps the white point of the source space to the white point of the destination space.

Absolute Colorimetric disables the matching of white and black points when converting colors. This method is not generally recommended unless you must preserve signature colors such as those used in trademarks or logos.

Relative Colorimetric is the default rendering intent.

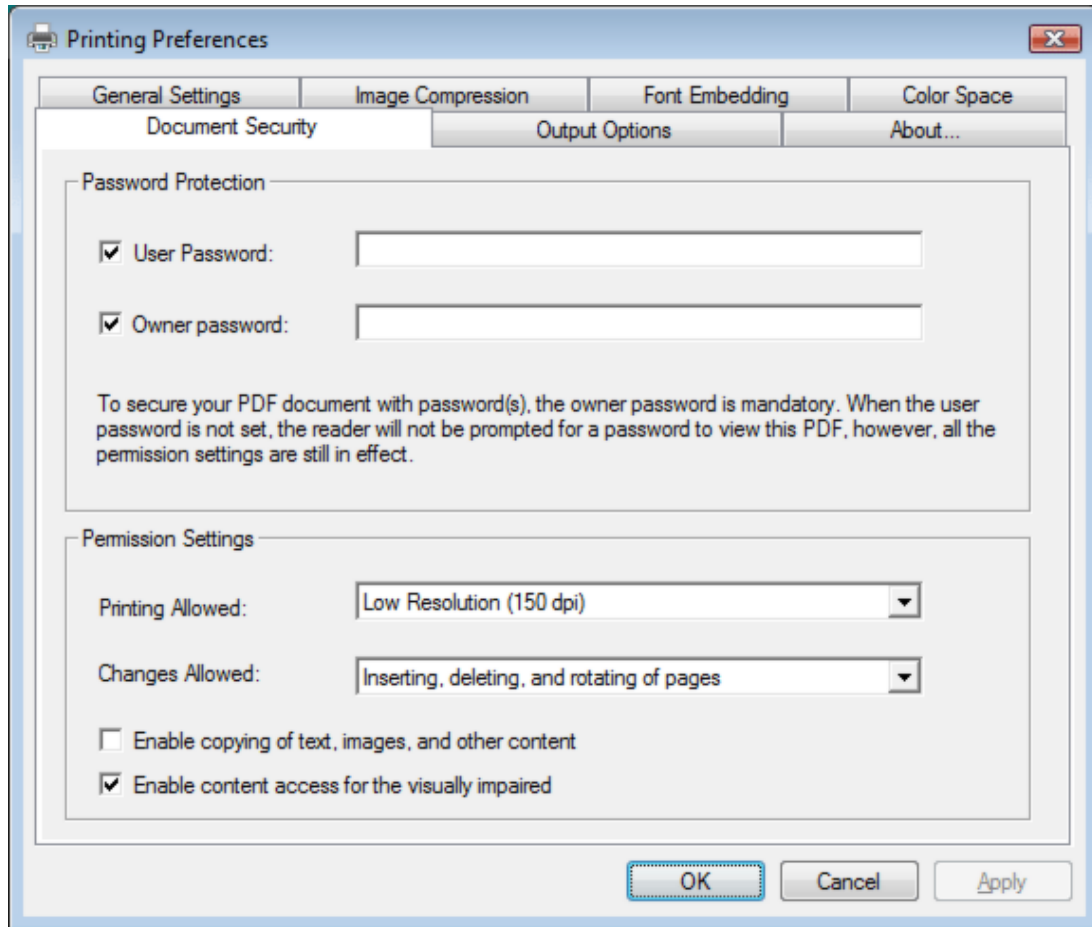
ICC Profile:

For RGB, choose a profile to define the color space of all RGB images in files. The default, sRGB IEC61966-2.1, is generally a good choice because it is becoming an industry standard and is recognized by many output devices. You can also choose None to prevent RGB images from being converted.

For CMYK, choose a profile to define the color space of all CMYK images in files. The default is U.S. Web Coated (SWOP) v2. You can also choose None to prevent CMYK images from being converted.

Document Security

If any security features are turned on by the creator of a PDF document, the PDF file will be encrypted with the combinations of all the powerful features of our most advanced PDF security technology.



Password Protection:

To help prevent security problems, you can set a password on a PDF document before you send or share it. The password identifies the reader or owner of the PDF document and helps warn anyone who views it if the document was modified after it was password-protected. You can also determine whether the document can be modified or printed by applying PDF permissions before sharing the document.

To secure your PDF document with password(s), the owner password is mandatory. When the user password is not set, the reader will not be prompted for a password to view this PDF, however, all the permission settings are still in effect.

To set, modify, and remove the permission settings, you are required to specify or enter the owner password. This password identifies the owner of the PDF document.

Permission Settings:

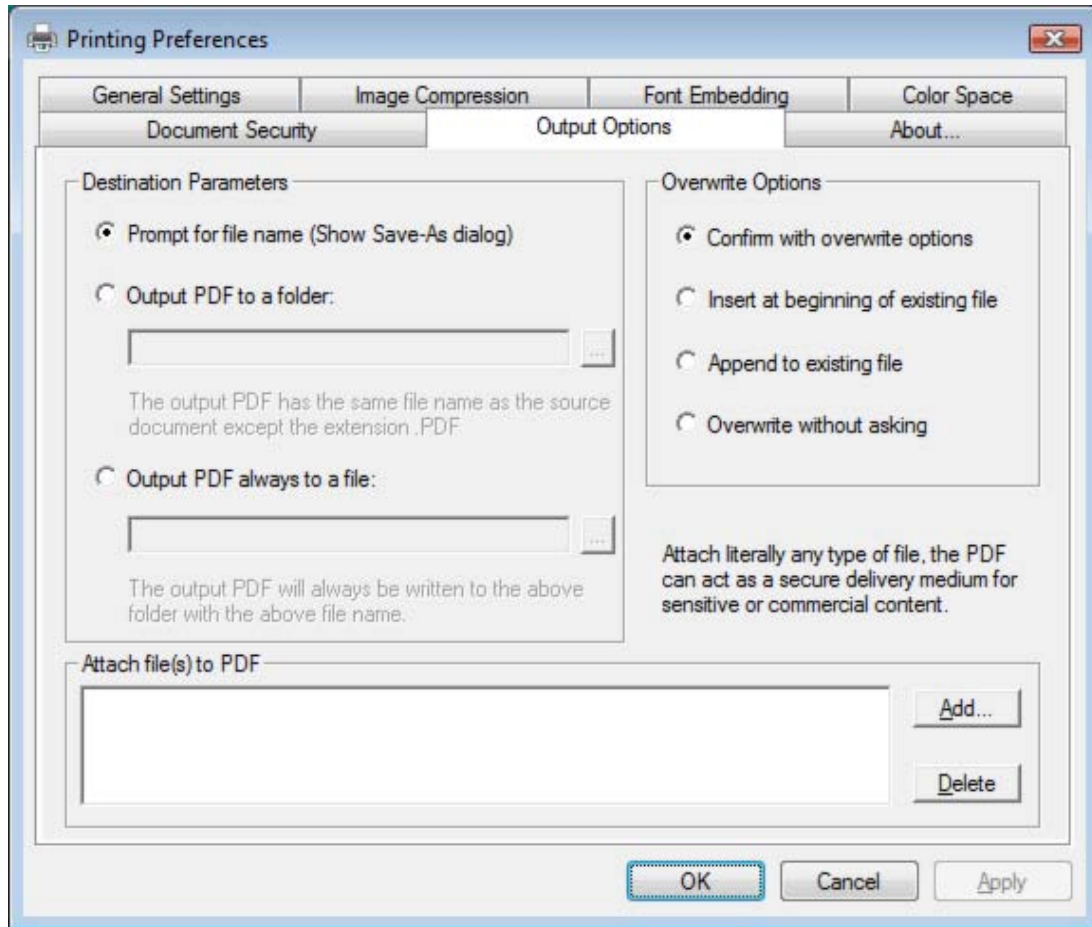
The following settings can be enabled or disabled to allow or disallow readers to operate on your PDF document,

1. Printing in high resolution or low resolution

2. Copying of text, images, and other content
3. Text access for screen reader device for the visual impaired
4. Inserting, deleting, and rotating of pages
5. Filling-in form fields and signing
6. Commenting, filling in form fields, and signing
7. Any change except extracting pages

Output Options

The PDF merge capabilities include being able to append, insert or overwrite PDF result to the destination PDF file in runtime. Once a choice is made in the Output Options, Royce PDF Printer acts as per the decision you have made when the destination PDF file exists.



Here are the four choices on Output Options,

1. Confirm with overwrite options
2. Insert at beginning of existing file
3. Append to existing file
4. Overwrite without asking

The following senaio describes how the first option decides the behavior of Royce PDF Printer:

Suppose you have a DailyReport.PDF file already in your "My Documents" folder, and you create a new PDF file from Microsoft Word, and specify DailyReport.PDF as the destination file name in the Save-As dialog. Now the conflict in file name happens. You will see a run-time warning dialog to prompt you to confirm which action to take,

1. Insert the resulting PDF file at beginning of the existing PDF file
2. Append the resulting PDF file to the existing PDF file

3. Overwrite existing file

To bypass this warning dialog for good and all, you should make a choice among "Insert at beginning of existing file", "Append to existing file", and "Overwrite without asking".

PDF Attachment

Many times you will want to attach a PDF or other file to your primary PDF document before sending it on or for archival purposes. For instance, you may want to attach a copy of the document's original source file, companion documents or other related materials. Luckily, the PDF format allows for just this, via PDF attachment features.

Using the Royce PDF Printer product, select Output Options Tab > Attach file(s) to PDF and then browse to choose your appropriate file. Once you have added your attachment, the attachment will be automatically added to the Attachment List.

To attach more files, simply repeat the process. You can attach as many files as you want.

Since it is possible to attach literally any type of file, the PDF can act as a secure delivery medium for sensitive or commercial content.

Remove Watermark

The trial version of the Royce PDF Printer stamps an Unregistered watermark in red on all PDF pages it creates. To remove the watermark, either purchasing a license or registering the product is required. After you purchase, you get the full retail version, which creates PDF files without the Unregistered watermark.

For more information on purchasing,

<http://www.roycesoft.com/register.html>

Technical Support

If you have a question about purchasing or using Royce PDF Printer, or have a suggestion for a new feature you'd like to see in a future release, please don't hesitate to write to us.

Contact Sales Representative:

sales@roycesoft.com

Contact Technical Support Staff:

support@roycesoft.com

Contact North American Sales Office:

Share-It! USA
9625 West 76th Street, Suite 150
Eden Prairie, MN 55344
USA

Languages: English

Tel: 1-800-903-4152
Fax: (724) 850-8187

European Sales Office:

Share-it! - element 5 AG
Vogelsanger Str. 78
50823 Cologne
Germany

Languages: English, German, French, Italian, Spanish and Portuguese

Tel: +49.221.31088.20
Fax: +49.221.31088.29

Frequently Asked Questions

The most frequently-asked questions about installing and using Royce PDF Printer product are answered below. If you have a question that isn't answered here or elsewhere on this Web site, please write to support@roycesoft.com.

Q: Is it legal to create PDF with your solution?

A: Absolutely legal. PDF has become an open standard. Any individual or company can write PDF creation software to create PDF files compliant to the Adobe PDF specification.

Q: Does your software support business graphics and press-ready output?

A: Yes. Royce PDF Printer supports CMYK, RGB, sRGB color spaces and 16 combinations of graphics and image compressions and rendering to assure the quality of business graphics and press-ready output.

Q: Our company has multiple sites, will one site license be enough?

A: Our Site License allows you to install the software on unlimited number of servers and workstations (including portables, notebooks, and laptops) in multiple offices of your company in different locations, cities, and countries.

Q: Can I get discount if I purchase multiple licences?

A: We offer volume discounts for individuals and companies that purchase multiple licenses. For more information on pricing, visit <http://www.roycesoft.com/purchase.html>

Q: I am not sure if your product works with Windows Server?

A: Our product is designed and certificated for Windows 2000 Server, Windows 2000 Advanced Server, Windows 2000 Datacenter, Windows Server 2003, and Windows Server 2008.

Q: I installed Royce PDF Printer on a Windows Server 2003, and the client can't have access to the shared 'Royce PDF Printer' printer. How come?

A: Here is the checklist,

1) Royce PDF Printer software has been installed with Administrative privilege onto the Windows Server 2003.

2) Guest account or an appropriate user account has been enabled to make the 'Royce PDF Printer' printer accessible by printing.

3) Firewall has been disabled or an appropriate rule to bypass firewall has been applied.

4) Royce PDF Printer Client software has been launched on the client with the correct parameters.

Q: I installed Royce PDF Printer on a Windows XP Pro computer, but failed to share the Royce PDF Printer for other computers. Why?

A: Here is the checklist,

1) Royce PDF Printer has been installed on the Windows XP Pro computer successfully.

2) You have enabled printer sharing in "Start"->"Control Panel"->"Printers and Faxes"->"Royce PDF Printer"->"Sharing...".

3) Firewall has been disabled or an appropriate rule to bypass the firewall has been applied.

4) Royce PDF Printer Client software has been launched on the client with the correct parameters.

Q: I installed Royce PDF Printer on a Windows Vista computer. Can I share my Royce PDF Printer for the other computers?

A: Sure. Please follow,

1) On your Vista computer, select "Start"->"Control Panel"->"Printers and Faxes", right-click on the icon of the "Royce PDF Printer" printer, and choose "Sharing...". Enable the printer sharing and specify RoycePDF as the share name.

2) On your client computer, launch the Royce PDF Printer Client software to install the shared RoycePDF printer from the server.

Q: Do I need to uninstall a previous version of the Royce PDF Printer before I install a newer version?

A: No. There is no need to uninstall the previous version before installing a newer version of the program.

Q: Do I need to uninstall the trial version of the Royce PDF Printer software before I install the full version?

A: No. The full version of Royce PDF Printer software can be installed over the trial version. This means that the trial version's files will be replaced by the full version's files.

Q: Can I use the Royce PDF Printer software on both my desktop and portable computer?

A: If you purchased a single-user license for the full version of the Royce PDF Printer software, you can use the software on one or more computers you own, provided the program is only used on one computer at a time. If more than one person will be using Royce PDF Printer on different computers at the same time, you must purchase a multiple-user license.

Q: How many licenses should I acquire, if I want to install Royce PDF Printer on a server computer?

A: When Royce PDF Printer is installed on a server computer that allows multiple users to access the shared printer, one license should be purchased for each user.

Q: Which product works on Microsoft Windows 7?

A: All our products work on Windows 7.

Q: What is your upgrade policy?

A: 3-Year Free Upgrades.

Q: Does Royce PDF Printer supports terminal services?

A: Yes.

Q: How can I make CMYK PDF document?

A: Before you print to the Royce PDF Printer, click the Properties button of your Royce PDF Printer, explore to the Color Space tab, set the Color Space to CMYK rather than RGB or sRGB.

Q: How to append to an existing PDF file?

A: You can save your PDF output to an existing PDF file, and a confirmation dialog will pop up asking you if you want to overwrite, or append the PDF result to this existing file, or insert the PDF result at the beginning of the existing file.

Purchase & Order

Why to buy?

The trial versions of the Royce PDF Printer software stamps an Unregistered watermark in red on all PDF pages it creates. To remove the watermark, purchasing a license or registering the product is required. After you purchase, you get the full retail version, which creates PDF files without the Unregistered watermark.

You can purchase the full version of the Royce PDF Printer software from Softonic, a leader in secure online order processing and online software delivery. For your convenience, a variety of ordering methods and payment options are available.

For more information on purchasing,

<http://www.roycesoft.com/purchase.html>

Billing & Payment:

Billing currency: USD, EUR, GBP, AUD, CAD, JPY, CHF.

Payment options: Credit card, Debt card, PayPal, Wire Transfer, Bank Check, Purchase Order etc.

NOTE: The simplest and cheapest and fastest way to buy our software is to order it Online.

Benefits of Purchase & Registration:

When you purchase the full version, you'll receive:

- Use of the software beyond the 90-day trial period
- No registration reminders or trial version watermarks on PDF files
- Free updates & upgrades to the latest version & future versions.
- Product support by e-mail totally free.

Delivery Options:

You can choose either of the following delivery methods:

1) Download: You will receive a download link to the full version immediately after your order is processed.

2) Download + CD: You will receive a download link as described above, and the setup file for the full version will also be mailed to you on one compact disc.

Online Purchase

Ordering Online

The easiest and fastest way to get the full version of Real PDF software is to order through Softonic's secure online store using a credit card, debit card, or PayPal. Softonic accepts Visa, MasterCard, American Express, JCB, and Diners Club, as well as U.K. debit cards Solo and Switch/Maestro.

Ordering online is easy, fast, safe, and secure!

Online credit-card, debit-card, and PayPal orders are processed immediately!

You can download the software right away!

Softonic also accepts payment by bank/wire transfer, check, and cash. If you choose one of these payment options, you will receive the necessary bank account information or postal address by e-mail after your order is processed.

Ready to purchase online?

<http://www.roycesoft.com/purchase.html>

Purchase Order

Ordering by Purchase Order

Business customers can place a purchase order (PO) through our resellers' customer service by fax or mail. POs should be printed directly from your accounting system on company letterhead. All POs must include the required information so that our resellers can process your order.

- (*) The product name Royce PDF Printer and the product number is 300262132
- (*) The requested quantity
- (*) The name the product will be licensed to
- (*) Your billing address and your delivery address, if different
- (*) Name, phone and fax number of the contact person for your order
- (*) The e-mail address to which the order confirmation and invoice should be sent, and your e-mail delivery address, if different
- (*) The requested billing currency

If you include all of the required information, your order can be processed immediately by our customer service team.

Customer Service USA

(Language: English)
share-it!
c/o Digital River Inc.
9625 West 76th Street, Suite 150
Eden Prairie, MN 55344, USA

Phone: +1 952 646-5747 (for calls from outside the U.S.) or +1 800 903-4152 (for calls within the U.S.)
Fax: +1 952 646-4552

Customer Service Europe

(Languages: German/English/French/Italian/Spanish/Portuguese)
share-it! - Digital River GmbH
c/o Digital River Ireland Ltd.
Block 4, West Park
Shannon Free Zone
Co. Clare
Ireland

Phone: +49 221 31088-20
Fax: +49 221 31088-29

Other Ways of Order

Ordering by Bank Check / Wire Transfer

You can send your Bank Check or Wire Transfer to us,

share-it! USA
9625 West 76th Street
Suite 150
Eden Prairie, MN 55344
USA

OR

share-it! - Digital River GmbH
c/o Digital River Ireland Ltd.
Block 4, West Park
Shannon Free Zone
Co. Clare
Ireland

Ordering by Phone

Call us and place your order,

Toll-free: 1-800-903-4152 (U.S.)
Phone: 1-952-646-5747 (Int'l)
+ 49.221.31088.20

Ordering by FAX

You can FAX your order to us,

Fax: 1-952-646-4552

OR

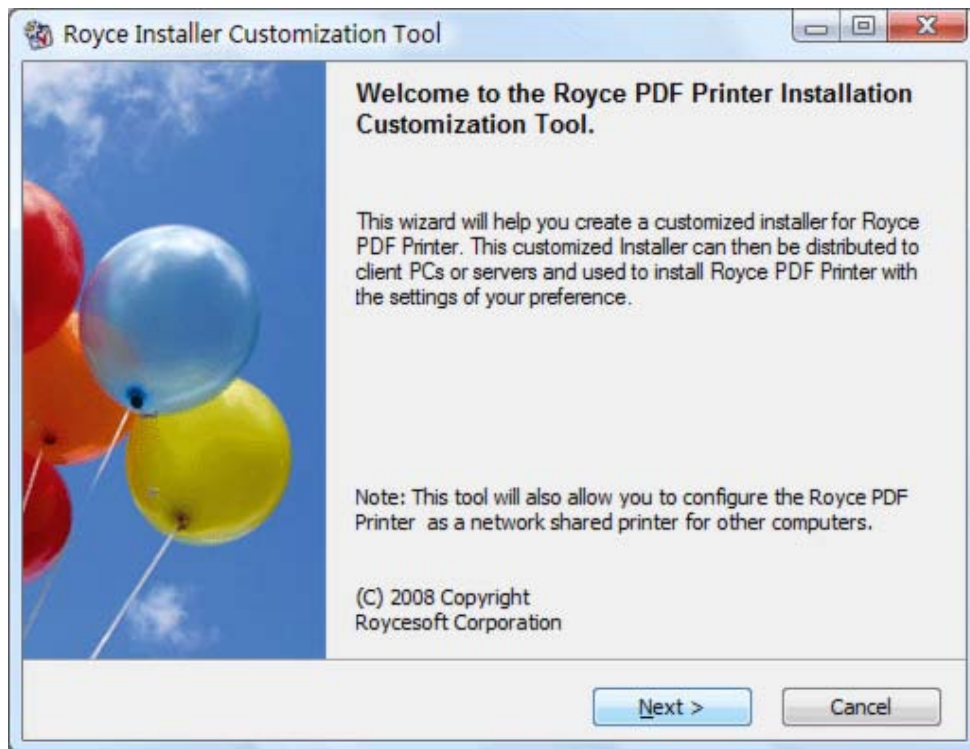
Fax: +49 221 31088-29

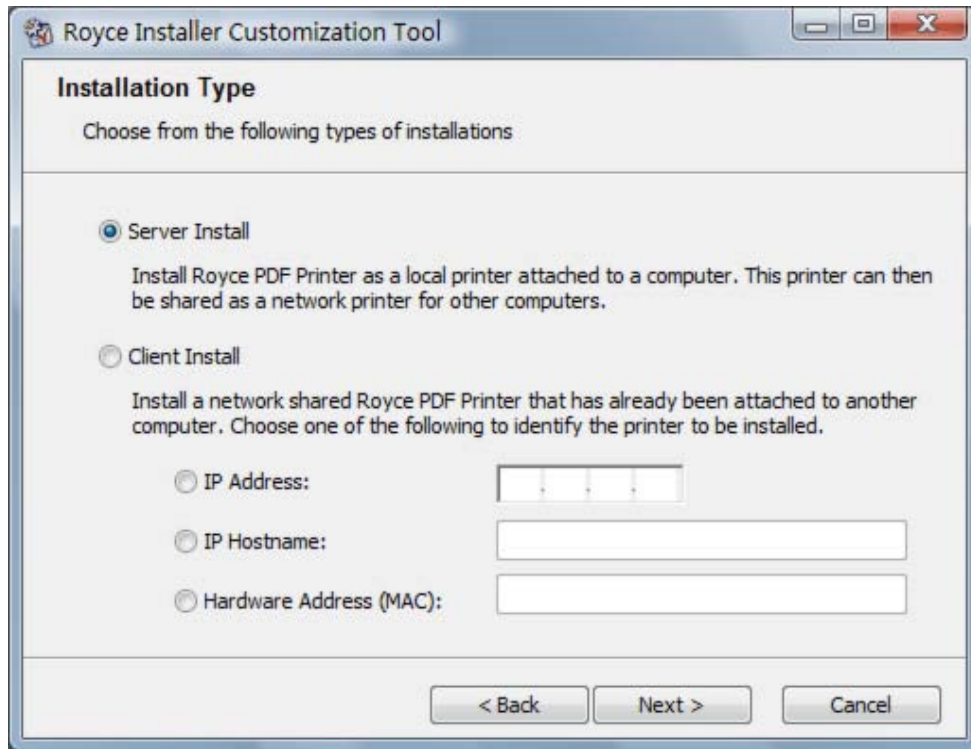
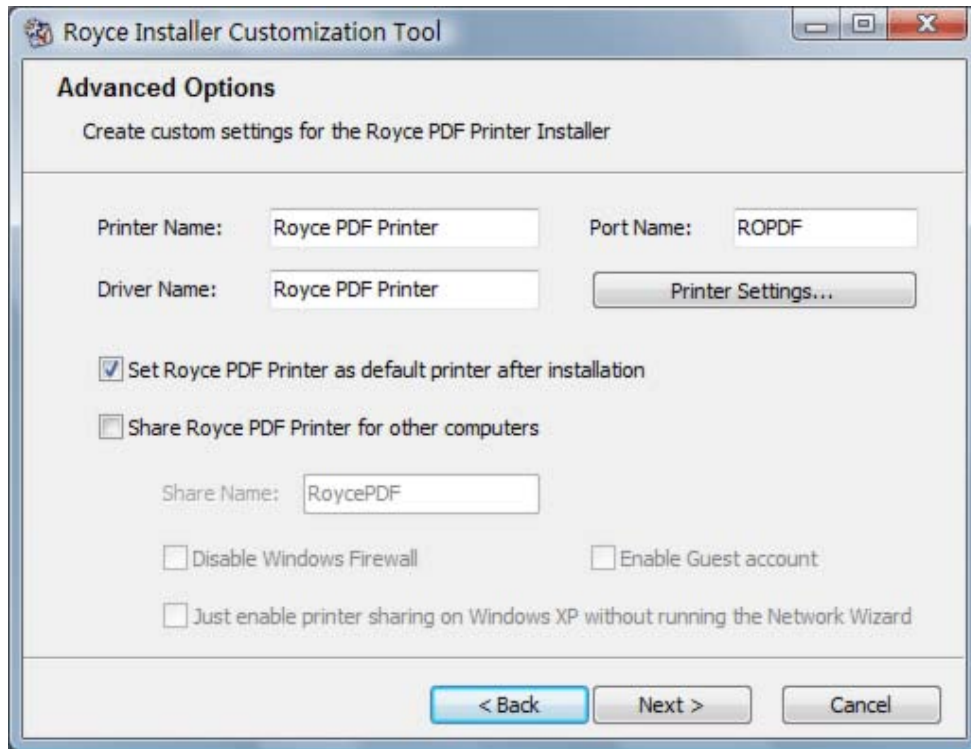
If you choose to mail or fax your order to share-it!, be sure to include your name, postal-mail address, and e-mail address, and to specify the product, quantity, and payment option you desire.

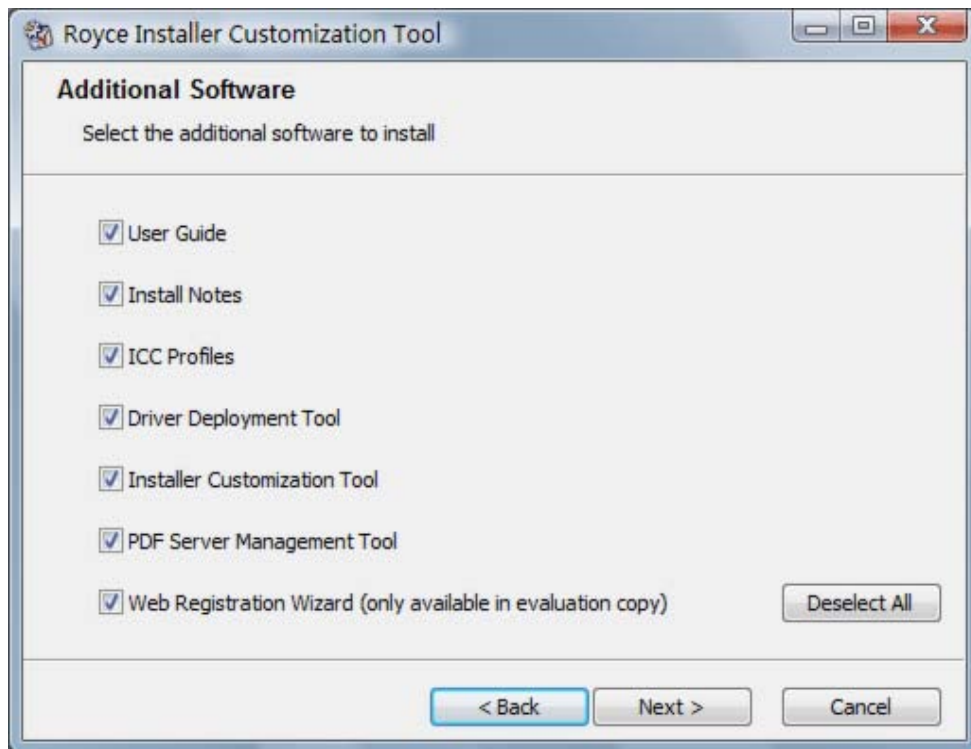
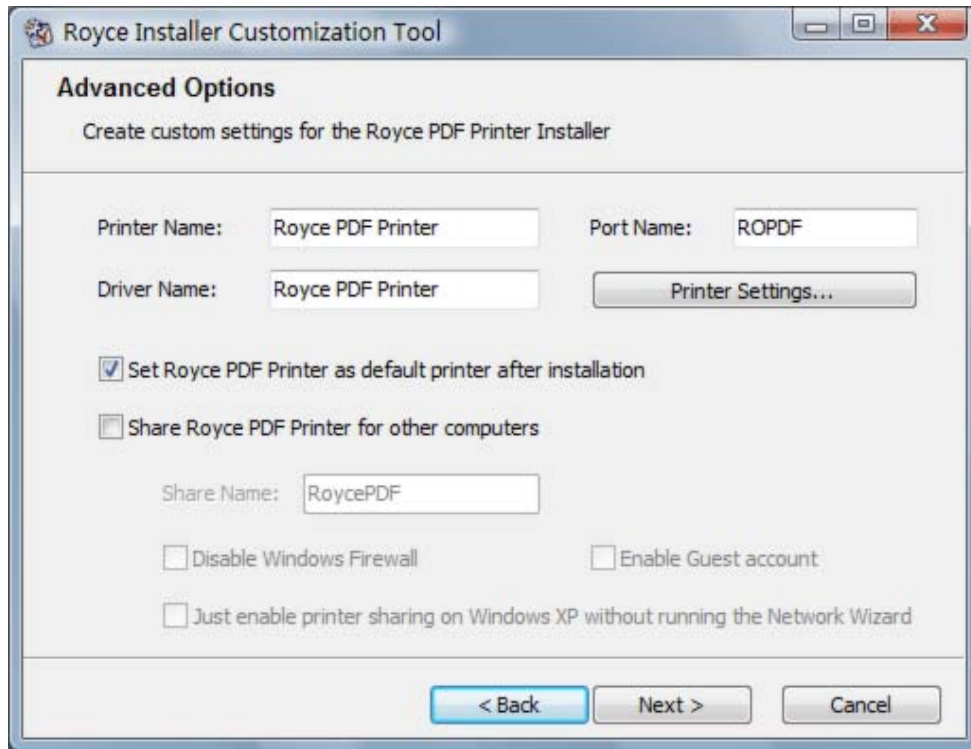
Installer Customization Tool

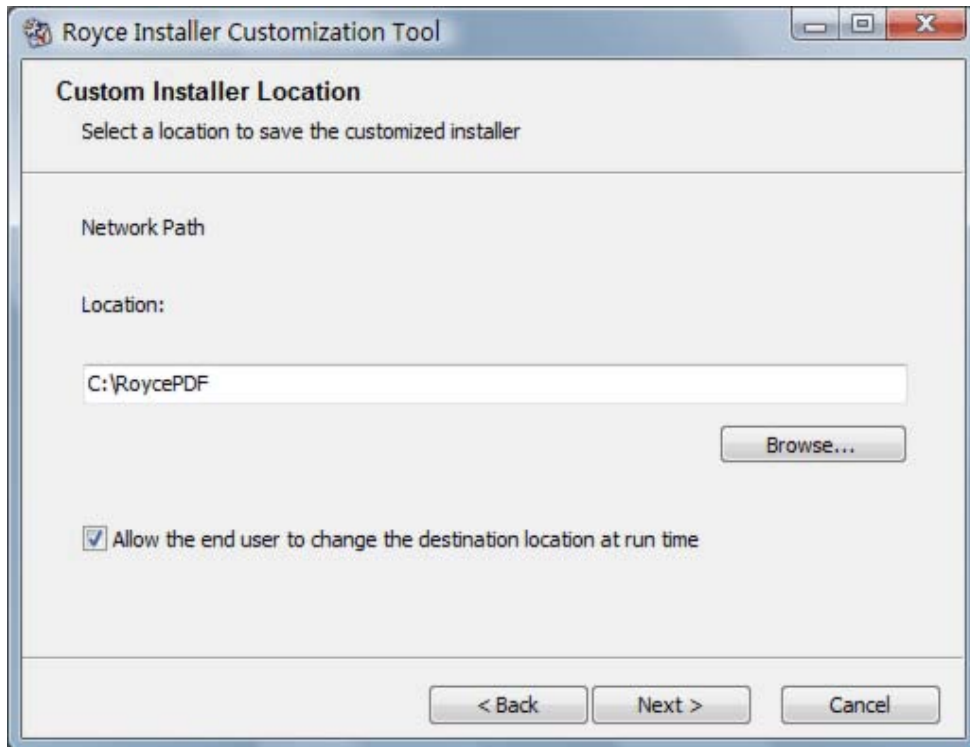
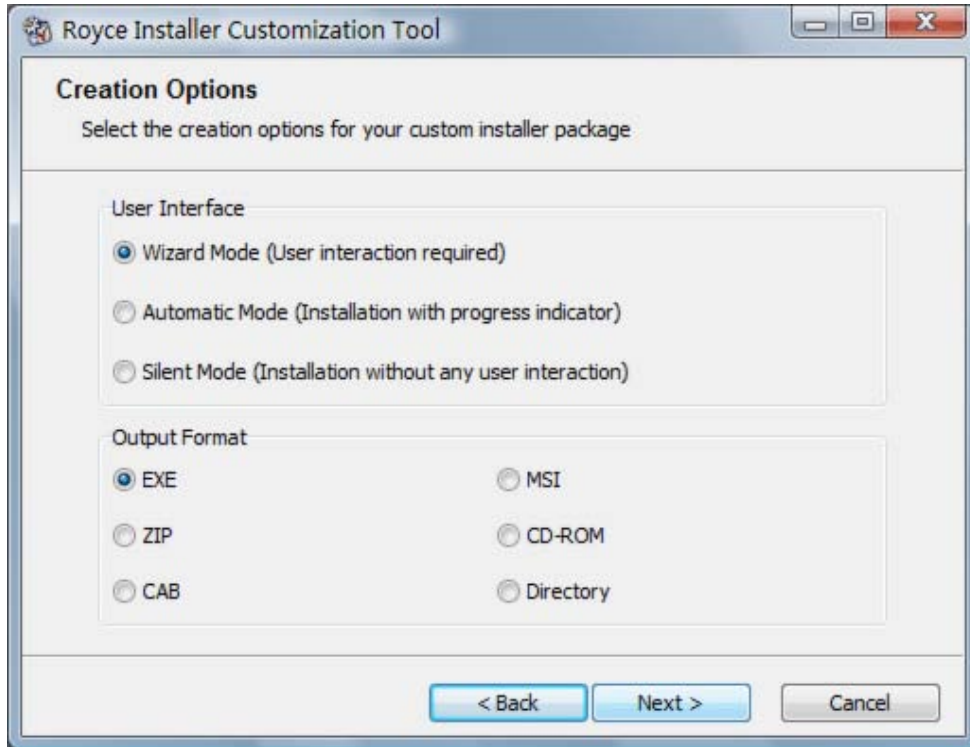
Customize the Royce PDF Printer installer as per your needs!

The Installer Customization Tool will not be installed onto your computer system by default. However, you can launch this tool direct from the Royce PDF Printer menu. Network administrators can use this utility to create a custom installation package that includes such components as PDF printer driver, ICC profiles, specific to your organization. You can preconfigure the printer driver settings, for example, change paper size, adjust graphics compression. Upon completion, the customization utility generates an executable file (*.EXE). User can use the file to install the preconfigured printer drivers along with other selected components on client machines. This utility supports wizard, silent, and batch operations. To gain access to the customization utility, select Administrator Software=>Installer Customization Tool on the first menu screen.









Driver Deployment Tool

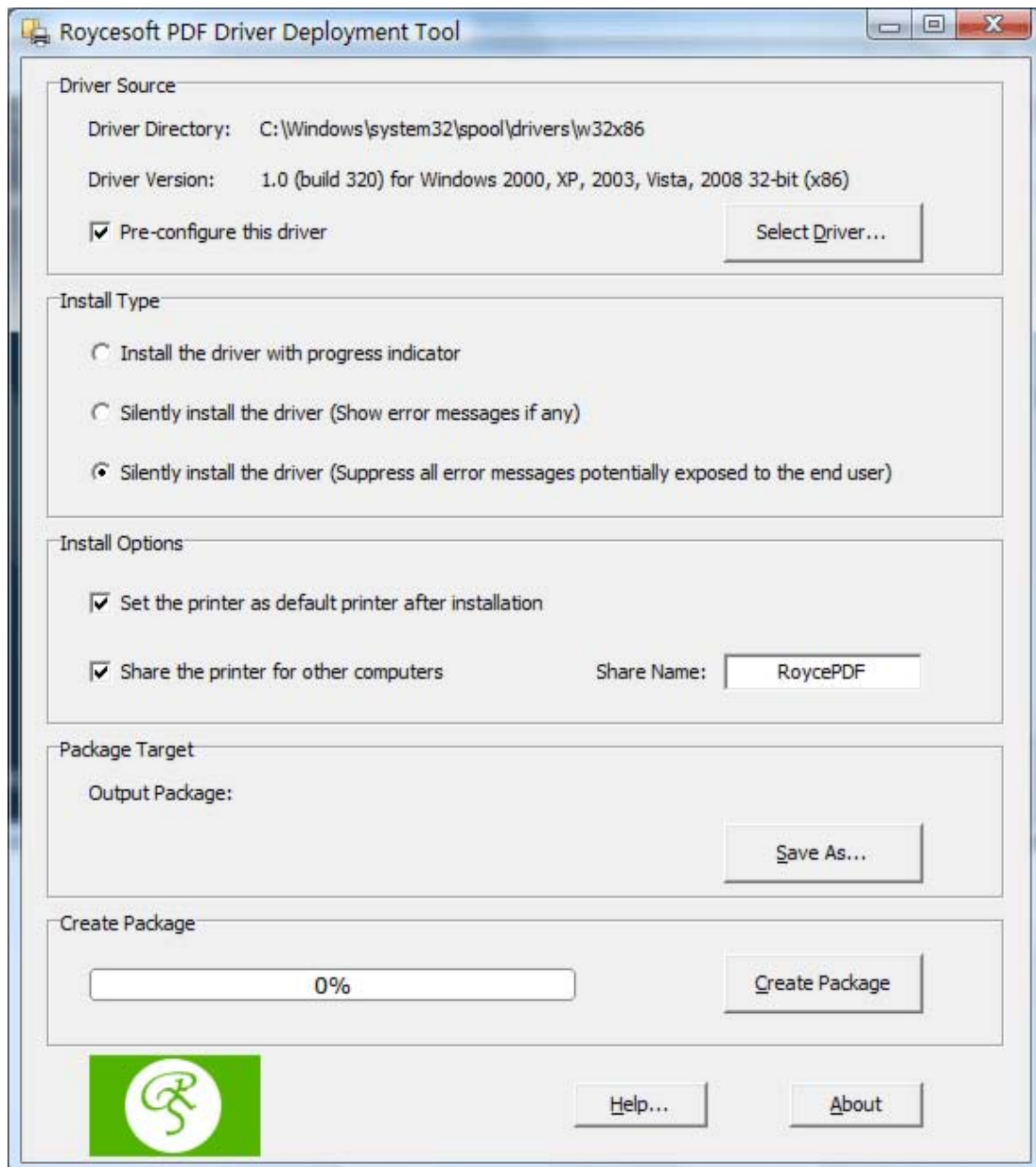
Deploy Royce PDF printer driver across your organization!

The Driver Deployment Tool is a tool that deploys Royce PDF printer driver on multiple machines. Network administrators can preconfigure this PDF printer driver before it is deployed on multiple workstations. All of them will share the same configuration.

This tool is a subset of the above Installer Customization Tool. The following features are available in this tool are already included in the Installer Customization Tool.

- Set Royce PDF Printer as the default printer after installation
- Share Royce PDF Printer for other computers after installation
- Automatic installation without user interaction
- Completely silent installation that can be integrated into your environment.

To gain access to the deployment utility, select Administrator Software=>Driver Deployment Tool on the first menu screen.



To uninstall or remove the Royce PDF printer, run the created driver package with the switch "uninstall".

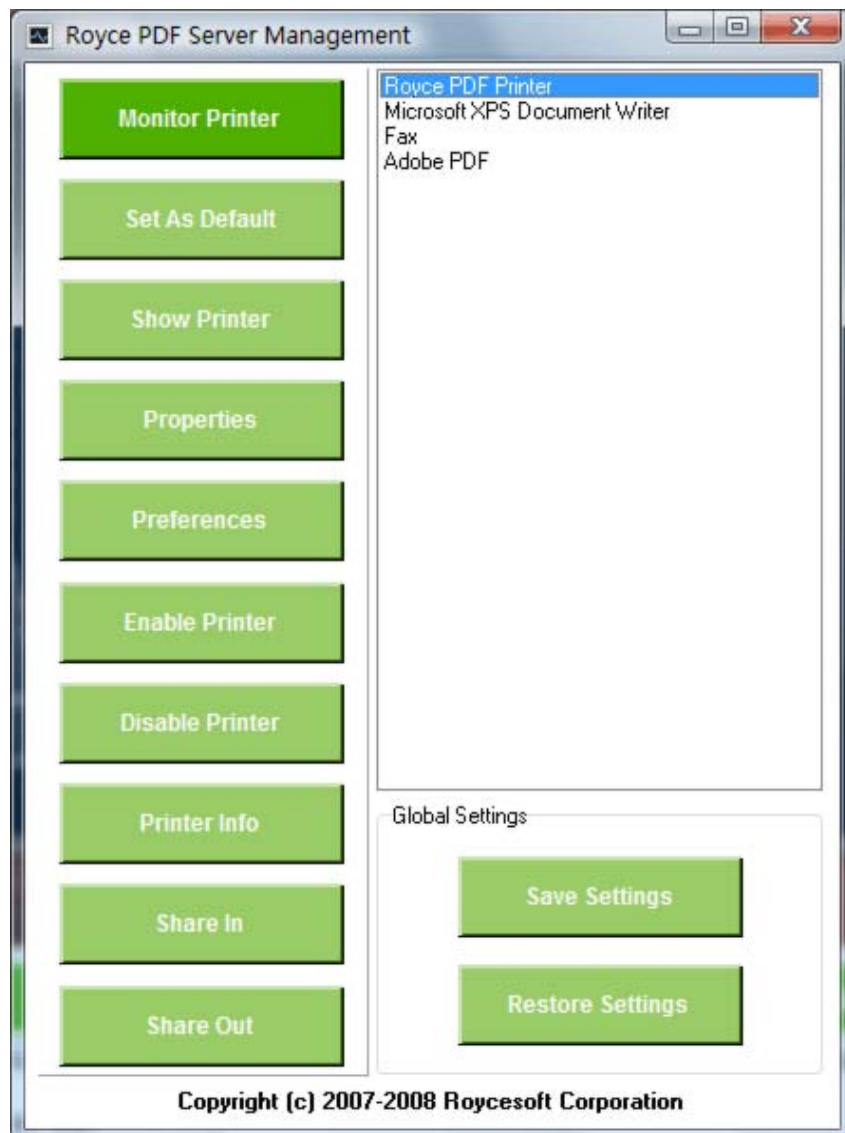
PDF Server Management

Manage PDF Print Server with ease!

A server with a PDF printer installed is deemed as a PDF print server. PDF Server Management Utility allows you to monitor the activities of the Royce PDF Printer and other printers on your server.

PDF Server Management Utility manages your print server by providing the following functionalities to all your printers including the Royce PDF Printer,

- Set as default printer
- Show printers and faxes folder
- Display printer's properties window
- Change printer's printing preferences
- Enable and disable printer
- Enumerate printer information and jobs in the print queue
- Share printer for other computers (Share Out)
- Install a shared printer from a remote computer (Share In)
- Export printer settings (Save Settings)
- Import printer settings (Restore Settings)



Index

- C -

Color Management 21
Create PDF 11

- D -

Document Properties 13
Document Security 23

- F -

Font Embedding 19
Frequently Asked Questions 30

- G -

General Settings 15

- I -

Image Compression 16

- M -

Major Features 7

- O -

Online Purchase 33
Other Ways of Order 36
Output Options 25
Overwrite Options 14

- P -

PDF Attachment 27
Printer Basics 6
Printer Engine Capabilities 9
Purchase Order 35

- R -

Remove Watermark 28
Royce PDF Printer 4

- S -

System Requirement 10

- T -

Technical Support 29
Trademark and Copyright Information 4

